

CALL (316) 686-0933
OFFICE / WAREHOUSE SPACE FOR LEASE

Buck Alley
RENTALS

For more information,
contact Buck
316.686.0933 office
316.655.1445 cell
buck@buckalleyrentals.com

3963 N. Woodlawn Ct., Suite #3 Bel Aire, Kansas



30' x 40' Space Available: 1,200 sq ft

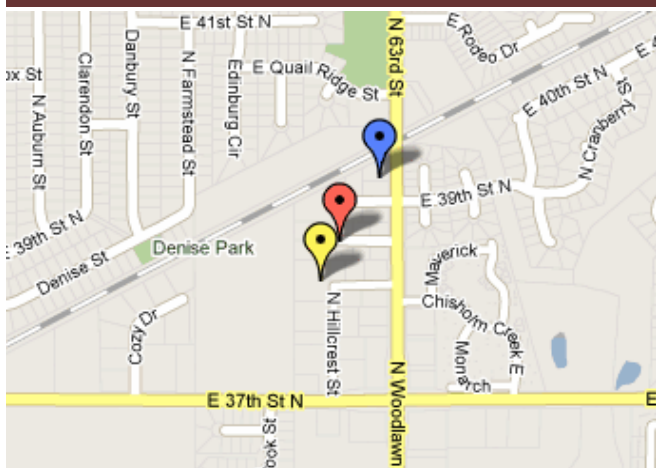
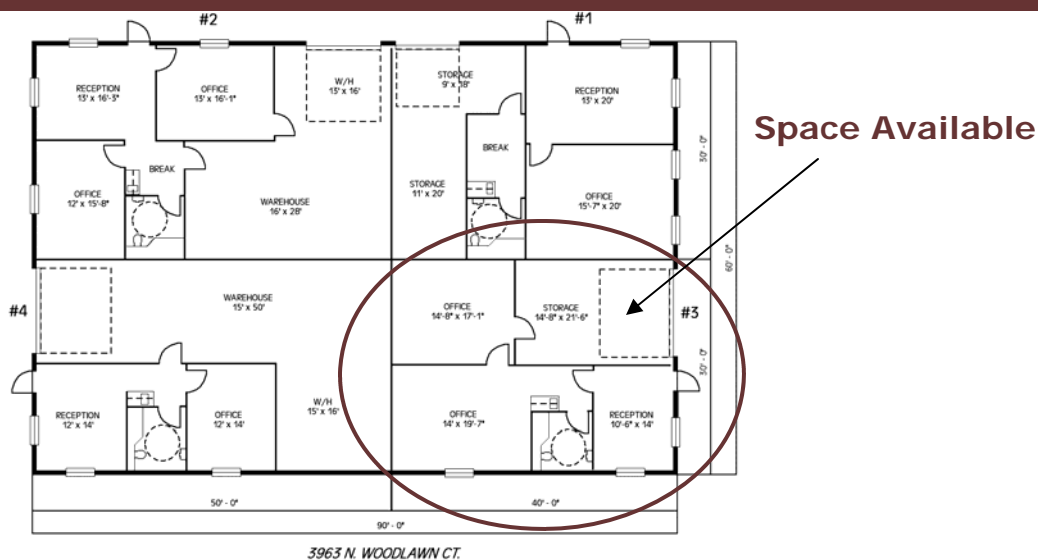
Finished Space: 870 sq ft

Warehouse: 330 sq ft

Gross Lease: \$850/month

Features:

- Reception and 2 large offices
- O/H door to warehouse
- Wet bar
- Brick building
- Central HVAC in all
- Trash/water/sewer paid



More Buck Alley Rentals

Bel Aire Plaza
4015, 4033, 4057, 4065, 4075
N. Woodlawn

Bel Aire Plaza II
3959, 3963, 3967, 3971, 3975,
3979, 3983 N. Woodlawn Ct.

Bel Aire Plaza III
3835 & 3919 N. Hillcrest

Buck Alley
RENTALS

3983 N Woodlawn Ct, Ste 1
P.O. Box 20384
Wichita, KS 67208
316.686.0933 phone
316.686.0939 fax
buck@buckalleyrentals.com
www.buckalleyrentals.com

FOR LEASE